



www.gazelletech.com

+968 79223620

Smart ERP Solutions

Transform the Way You Work with Smart ERP



www.gazelletech.com

+968 79223620

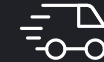
Welcome to Gazelle Business Solution — your trusted partner for smart, scalable, and open-source ERP software tailored for growing businesses. Our ERP platform streamlines operations, integrates all departments, and provides real-time data to help you make informed decisions that drive efficiency and growth.



Industries We Serve



Manufacturing



Logistics & Distribution



Retail



Construction & Real Estate



Healthcare



Professional Services



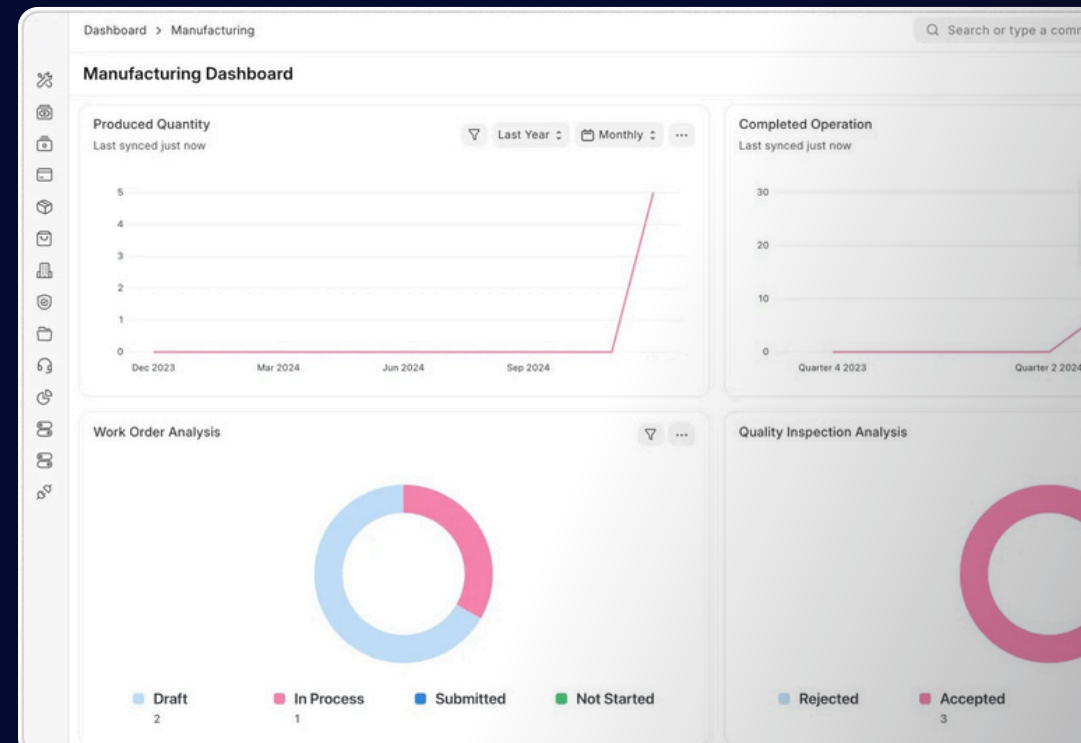
Financial Services



Smart ERP for the Manufacturing Industry

Streamline Production. Boost Efficiency. Reduce Costs.

Gazelle's ERP for manufacturing is designed to meet the dynamic needs of modern factories and production units. From managing raw materials to tracking finished goods, our all-in-one ERP system ensures complete visibility, real-time control, and enhanced operational efficiency—right from the shop floor to your customer's doorstep.



Key Features

Material Resource Planning

Forecast material needs, manage procurement, and avoid stockouts or overstocking.

Inventory Management

Real-time stock levels, batch tracking, and multi-warehouse support.

Bill of Materials (BOM)

Create and manage multi-level BOMs for complex products with ease.

Production Planning

Align demand with supply, optimize resources, and reduce downtime.

Subcontracting

Easily manage outsourced processes, raw material transfers, and billing.

Work Orders & Job Cards

Create and manage multi-level BOMs for complex products with ease.

Quality Control

Maintain product standards with inspection templates and rejection tracking.

Cost Analysis

Gain insights into production costs, wastage, and overheads.



www.gazelletech.com

+968 79223620



Manufacturing Excellence Across Industries

Gazelle's Smart ERP isn't just built for manufacturing—it's engineered to adapt to a wide range of industrial domains. Whether you're producing heavy machinery, textiles, food products, or consumer electronics, our system delivers the tools you need to operate with precision, consistency, and control.



Industries
We Support



**Automotive
& Auto Parts**

**Food &
Beverage**

**Textiles &
Apparel**

**Electronics &
Appliances**

Pharmaceuticals

**Furniture &
Woodwork**



ERP for Logistics & Distribution

Optimize Every Step of Your Supply Chain with Smart ERP

Gazelle ERP for Logistics & Distribution empowers businesses to streamline inventory, automate order processing, manage warehouses, and ensure on-time delivery—all from a single, integrated platform. Whether you're managing a local distribution network or a global logistics operation, our ERP simplifies complexity and improves efficiency.



Stock

Search or type a co

Stock Summary

Stores - SPINDL Item Item Group Projected qty

Stores - SPINDL	Labels	0	310 0
Stores - SPINDL	Yellow Formal Shirt	0	110 45
Stores - SPINDL	Skateboard	35	259 200
Stores - SPINDL	Indian Traditional Kurta	0	196 20 (120)
Stores - SPINDL	Lehenga	0	185 10 (160)
Stores - SPINDL	Glass	0	15 0
Stores - SPINDL	Designer Blazer	0	0 0 (4)
Stores - SPINDL	Knee pads	0	0 5
Stores - SPINDL	Elbow pads	0	0 5
Stores - SPINDL	Metal Coat Hanger	0	5 10
Stores - SPINDL	Resistance Band-RED	0	5 10

Key Features for Logistics & Distribution

Warehouse Management

Monitor stock in real-time and manage multiple warehouses with ease.

Order Management

Automate sales/purchase orders and streamline fulfillment.

Inventory Control

Forecast demand, auto-reorder, and prevent stock issues.

Shipping & Delivery

Track shipments and keep customers updated.

Billing & Invoicing

Generate invoices, manage pricing, returns, and bulk billing.

Fleet Management

Assign drivers, plan trips, and track vehicle usage.

Customer/Vendor Portals

Enable self-service access for orders and transactions.

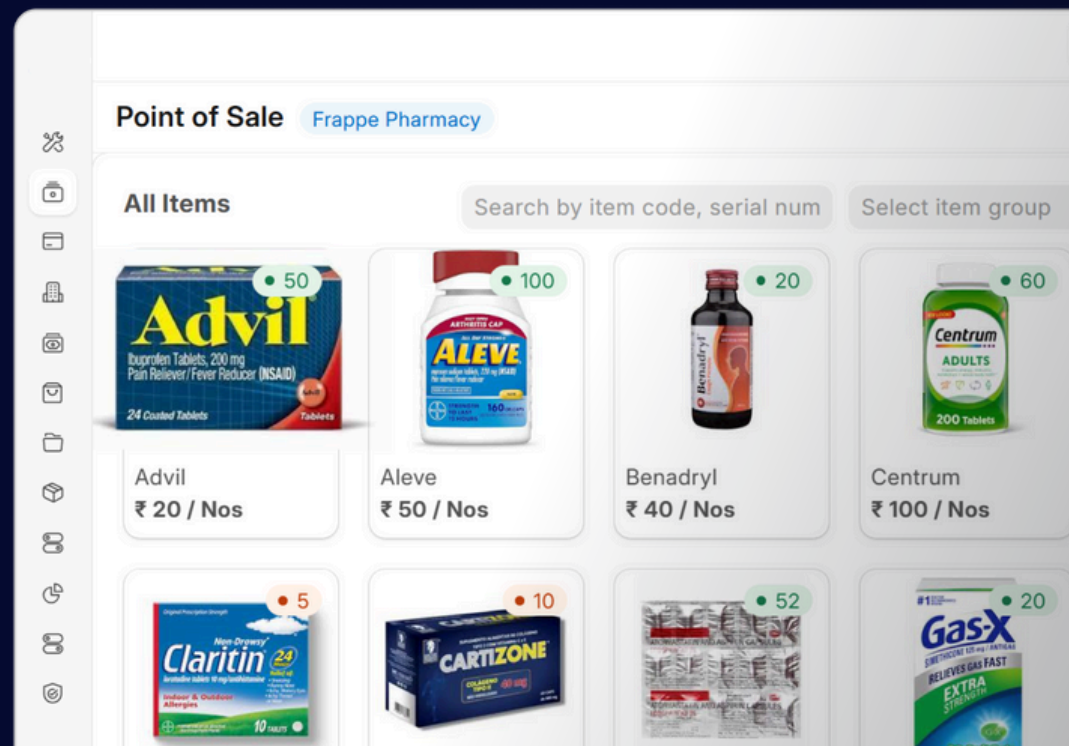
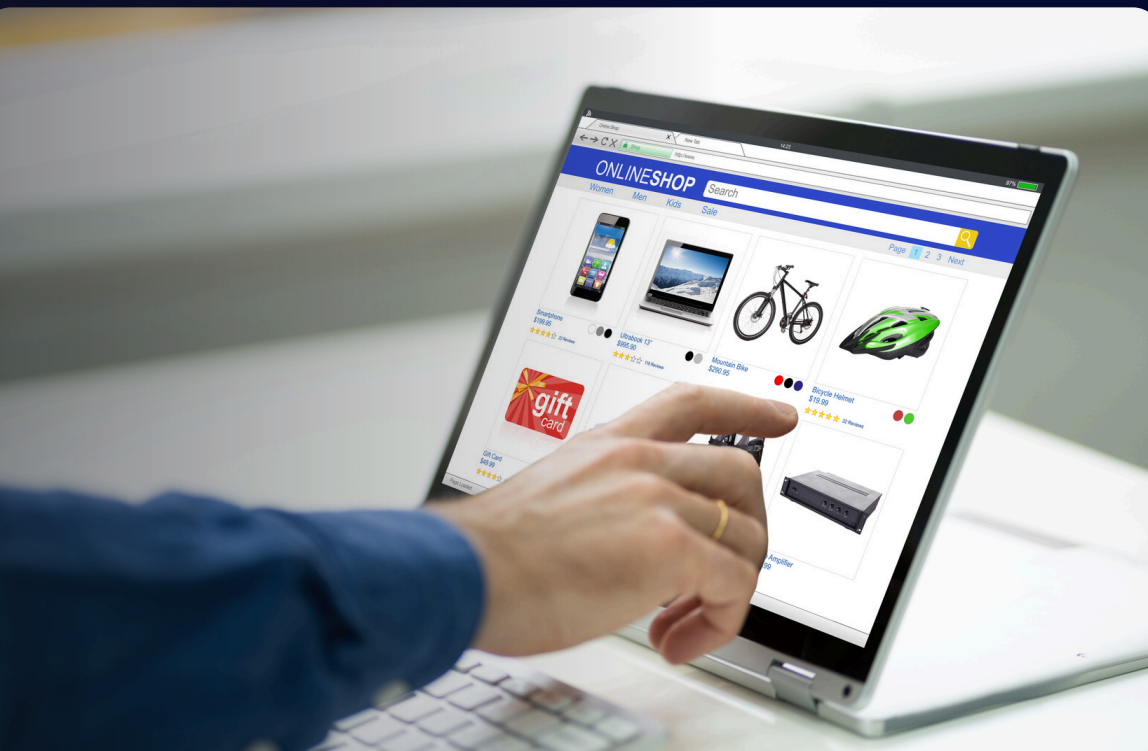
Industries We Support

- Freight Forwarding Companies
- Warehouse & Storage Providers
- Distribution Companies
- eCommerce Fulfillment Centers
- Third-Party Logistics Providers

Smart ERP for Retail Businesses

Simplify Retail Operations – From Storefront to Stockroom

Gazelle ERP for Retail is designed to meet the fast-paced needs of modern retail businesses. Whether you run a single store, a chain of outlets, or an eCommerce platform, our ERP helps you manage sales, inventory, billing, and customer engagement—all in one place.



Key Features for Retail Success

Point of Sale (POS)

Fast, offline-ready POS for real-time billing, returns, discounts, and payments—ideal for retail counters and pop-up shops.

Stock Management

Track stock across multiple locations, manage stock transfers, get low-stock alerts, and automate reordering.

Sales Management

Monitor sales trends, customer preferences, and purchasing history to offer better experiences and build loyalty.

Barcode & Batch Tracking

Easily scan products, manage batches, and ensure accurate inventory counts with barcode-enabled tools.

Multi-Store Management

Centralized control to monitor performance, sales, and stock across all your stores or outlets in real-time.

Promotions & Pricing Rules

Run special offers, discounts, loyalty points, and dynamic pricing based on customer type or season.

Accounting & Tax Compliance

Integrated invoicing, financial reporting, and tax compliance to keep your business audit-ready.

Industries We Support

- Fashion & Apparel Stores
- Supermarkets & Grocery Chains
- Electronics & Mobile Stores
- Furniture & Home Decor Retailers
- eCommerce & Omnichannel Sellers

ERP for Construction & Real Estate

Streamline Complex Projects with a Smart, Integrated ERP

Gazelle ERP is purpose-built for Engineering, Procurement, and Construction (EPC) companies looking to simplify project management, control costs, and deliver work on schedule. From tendering to execution, our ERP connects all departments on a single platform to ensure collaboration, transparency, and operational efficiency.



Manufacturing > Subcontracting Order > SC-ORD-2025-00006

Mech-Tech Machnie Quoting Material Transferred

Details Address and Contact Other Info Connections

Subcontracting Purchase Order * PUR-ORD-2025-00006 Company * Spindl Inc

Job Worker * Mech-Tech Machnie Quoting Date * 28-01-2025

Job Worker Name * Mech-Tech Machnie Quoting Required By 28-01-2025

Job Worker Warehouse * Mech-Tech - SI

Accounting Dimensions ▾

Set Target Warehouse Stores - SI
Sets "Warehouse" in each row of the Items table.

Items

No.	Item Code *	BOM *	Quantit...	Rate *	Amount *	Item Tax Templa
1	Black Quoted Ste	BOM-Black Quot...	100	\$ 130.00	\$ 13,000.00	

Key Features for EPC Companies

Project Management

Plan and track multi-phase projects with real-time visibility.

Procurement

Automate purchases, manage vendors, and maintain stock accuracy.

Job Costing

Control budgets and monitor costs for better profitability.

Timesheets

Allocate resources and track labor across projects.

Billing

Handle milestone or time-based billing with ease.

Document Control

Store and access project files securely.

Asset Tracking

Monitor equipment use and schedule maintenance efficiently.

Industries We Support

- Civil & Infrastructure Contractors
- MEP Contractors
- Real Estate Developers
- Industrial Engineering Firms
- Oil & Gas EPC Companies



www.gazelletech.com

+968 79223620

Smart ERP for Healthcare & Clinics

Streamline Patient Care and Clinic Operations with One Powerful Platform

Gazelle ERP for Healthcare is an all-in-one solution built to simplify clinical workflows, enhance patient engagement, and optimize administrative processes. From appointment scheduling to billing and medical records, manage every aspect of your healthcare practice seamlessly.



Available slots

Medical Department *

Healthcare Practitioner *

Date *

Clinic

Dr. Adam Smith

27-12-2024

Practitioner Schedule: Standard Schedule

Service Unit: OPD - CHUL

9:00	9:15	9:30	9:45	10:00	10:15	10:30	10:45	11:00	11:15
11:45	12:00	12:15	12:30	12:45	13:00	13:15	13:30	13:45	14:00
14:30	14:45	15:00	15:15	15:30	15:45	16:00	16:15	16:30	16:45
17:15	17:30	17:45	18:00	18:15	18:30	18:45	19:00	19:15	19:30
20:00	20:15	20:30	20:45	21:00	21:15	21:30	21:45	7:00	7:15
7:45	8:00	8:15	8:30	8:45					

Key Features For HealthCare

Patient Management

Maintain detailed patient profiles, including demographics, medical history, prescriptions, and lab reports.

Appointment Scheduling

Allow patients to book appointments online while managing doctor availability, calendar sync, and reminders.

Electronic Medical Records

Digitally store, access, and manage patient data with secure, centralized EMR.

Billing & Invoicing

Automate consultation charges, procedures, lab tests, and insurance claims with accurate, customizable billing.

Laboratory & Diagnostics

Manage lab test bookings, reports, and workflows with ease.

Pharmacy Management

Track stock, manage prescriptions, and streamline in-house pharmacy operations.

Multi-Clinic Support

Run multiple clinics or branches under one system with centralized control.

Industries We Support

- Clinics & Hospitals
- Diagnostic Labs & Imaging Centers
- Dental & Eye Clinics
- Telemedicine Providers
- Wellness Centers & Multi-Specialty Clinics



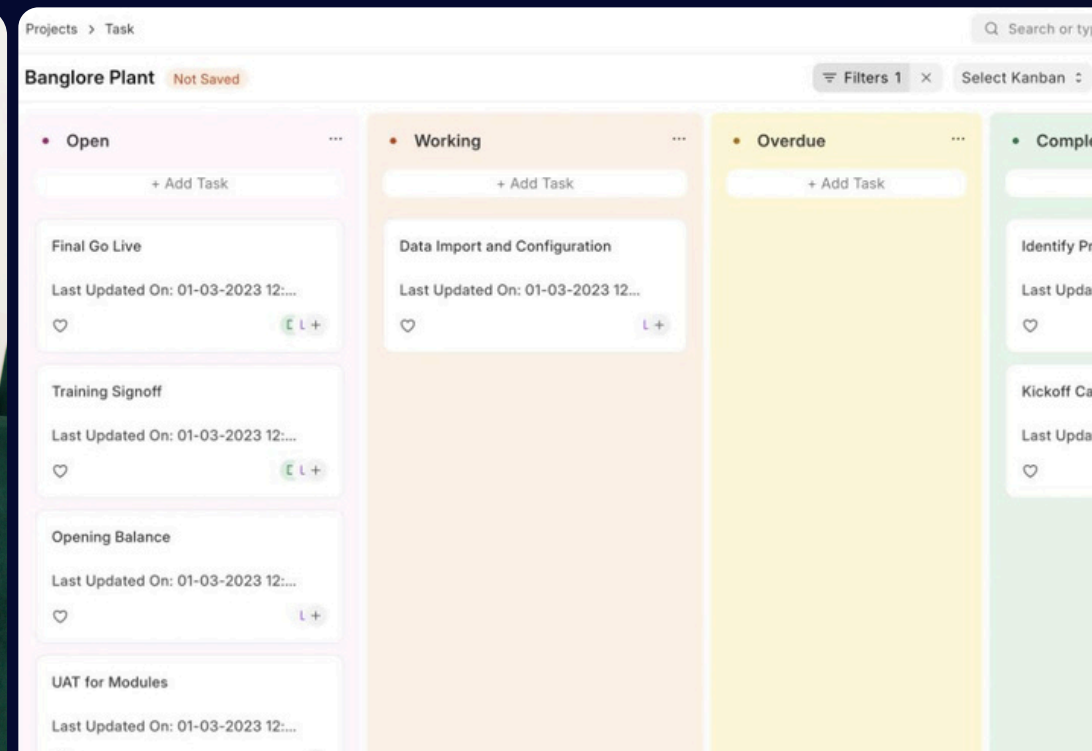
www.gazelletech.com

+968 79223620

Smart ERP for Professional Services

Manage Projects, Clients, and Billing – All in One Place

Gazelle ERP for Services is built to help service providers streamline operations, manage client relationships, and deliver projects on time. Whether you're a consulting firm, agency, IT service provider, or maintenance company, our ERP keeps your team productive and your customers happy.



Key Features Professional Services

Task Management

Plan, assign, and track projects with timelines, milestones, and task dependencies.

Resource Allocation

Log work hours, track team productivity, and allocate resources based on project needs.

Client Management

Maintain detailed customer records with communication logs, service history, and more.

Quotations & Billing

Create custom quotes, convert them into sales orders, and automate recurring invoices.

Service Contracts

Manage long-term service agreements with clear terms, renewal reminders, and billing cycles.

Ticket Tracking

Centralize support with ticketing systems to resolve client issues faster.

Document Management

Organize contracts, proposals, reports, and files in one place.

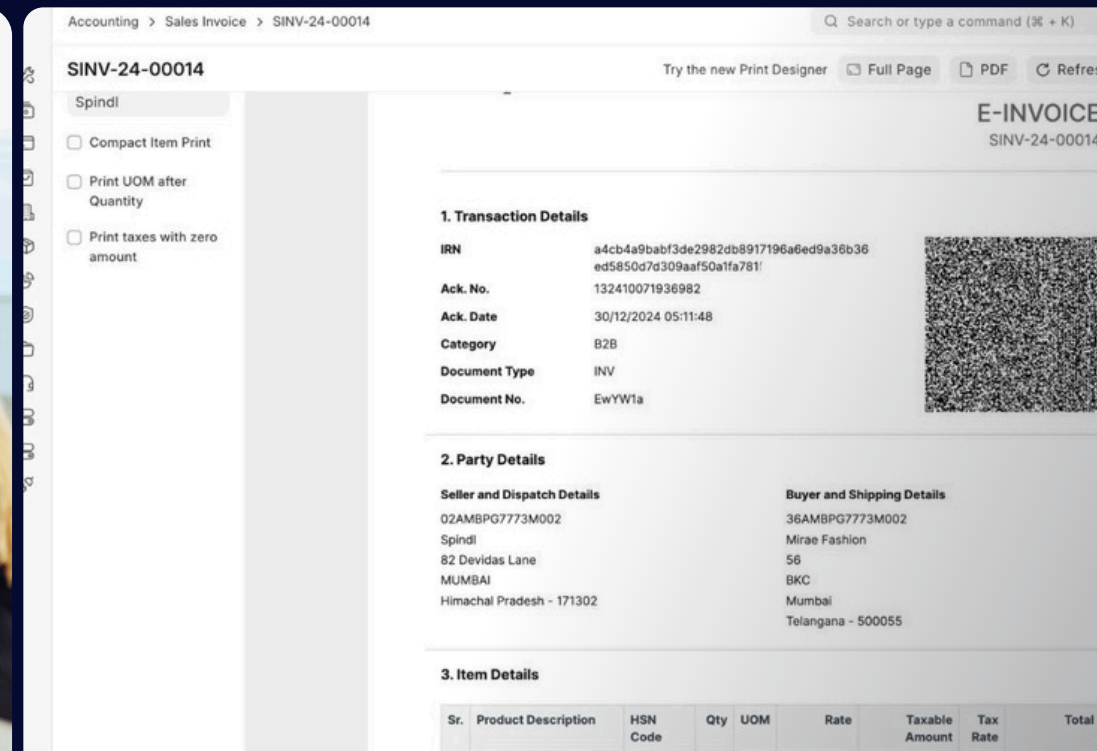
Industries We Support

- IT & Tech Service Providers
- Consulting Firms
- Marketing & PR Agencies
- Field Service Companies
- Repair & Maintenance Businesses

ERP for Financial Services

Streamline Financial Operations & Deliver Trusted Services

Gazelle ERP for Financial Services empowers institutions like banks, NBFCs, insurance firms, and investment consultancies to manage their operations with precision and compliance. From customer onboarding and loan management to billing, accounting, and reporting — everything is integrated in one smart platform.



Key Features for Financial Services

Customer Onboarding

Collect KYC documents, verify identity, and streamline new client registration.

Accounting & Billing

Real-time general ledger, multi-currency support, and automated invoicing.

Loan Management

Track loan applications, disbursements, EMLs, and payment schedules.

Document Management

Secure storage of contracts, compliance documents, financial reports, and more.

Subscription Billing

Automate recurring charges for retainer clients and subscription-based services.

Compliance & Audit

Ensure regulatory adherence with built-in compliance tracking and audit-ready reports.

Document Management

Organize contracts, proposals, reports, and files in one place.

Industries We Support

- IT & Tech Service Providers
- Consulting Firms
- Marketing & PR Agencies
- Field Service Companies
- Repair & Maintenance Businesses

Conclusion

Gazelle Business Solution delivers a comprehensive, modular ERP platform designed to meet the diverse needs of industries like manufacturing, retail, healthcare, construction, logistics, financial services, and more. With powerful tools for accounting, HR, CRM, inventory, project management, and compliance, our ERP empowers businesses to streamline operations, enhance productivity, and scale efficiently. Whether you're a startup or an enterprise, Gazelle Smart ERP adapts to your workflow, offering flexibility, security, and real-time insights — all in one unified system. Partner with us to drive digital transformation and unlock your business's full potential.



www.gazelletech.om

+968 79223620

Contact Us

CR: 1574917



www.gazelletech.om
www.gazelletec.com



ajin@gazelletec.com



South Al Mabilah, Al Seeb,
Muscat Governorate – 124